

Post type Current Transformers

MC SERIES



MC132 E1



MC132 E3

- **Indoor**
- 3.6- 7.2 - 12 - 17.5 -24 - 36 KV
- Primary current from 0 to 3000 A
- Ith up to 1000 Ipn or 100 KA/1s
- Compact size
- Cast-resin insulated
- Low level of partial discharges
- Up to 5 cores
- Screw-in connectors

Current transformers vacuum moulded in self-extinguishing epoxy resin for the measurement of AC currents up to 3000A.

This comprehensive and compact range of current transformers has been designed to meet the requirements of MV switchgear manufactures.

It offers a very low level of partial discharges and up to 5 separate cores. It allows double-ratio up to 600-3000A.

Technical data

Rated insulation level	3.6/10/40kV to 36/70/170 kV
primary current Ipn	Up to 3000 A
Secondary current Isn	5 or 1 A
Frequency	50 or 60 Hz
Rated output	1 to 100 VA
Accuracy class	0.1 - 0.2 - 0.2S -0.5-0.5S-1-3-5P-10P-CIX
Security factor	5 to 20
Accuracy limit factor	5-10-15-20-30
Continuous thermal current	1.2 Ipn
Short-time thermal current Ith	Up to 1000 Ipn or 100KA/1s
Dynamic current Idyn	2.5 Ith
Insulation class	E
Altitude	1000 m

Ambient temperature	-5C° to + 40 C° -25C° to + 40 C° -40C° to + 40 C°
---------------------	---

Ambient temperature

Standards	IEC60044-1, IEC61869-2, IEC60044-6
-----------	------------------------------------

Other characteristics on request

Power frequency withstand voltage	Up to 75KV
Secondary current Isn	0.005 to 10A
Multi-ratio	by secondary taping
Double-ratio	5-10 to 600-1200 by primary change-over
Multiple Cores	Up to 5 Cores
Continues thermal current	1.2 to 1.5Ipn and 2Ipn
Ambient temperature	Up to + 110C° ANSI C57.13, IEC60044-1, IEC60044-6, BS, A,VDE
Standard	
Altitude	Up to 2000

Accessories/Option

Base plate

Sealable terminal cover

With capasitor Divider

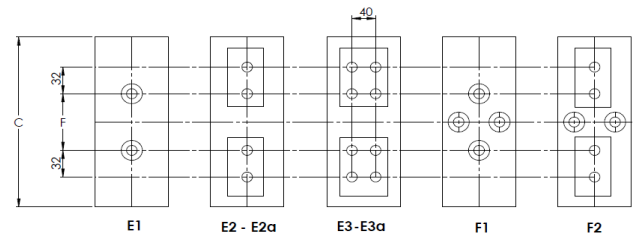
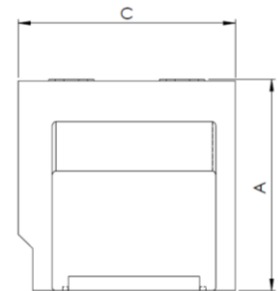
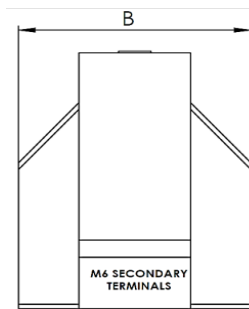
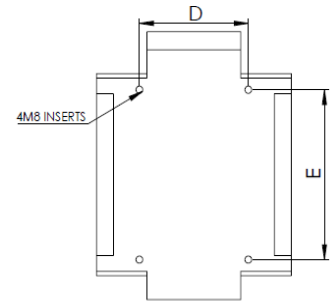
This document is the property of Pars Shar and maybe changed without prior notice



MC SERIES

Support type current transformer indoor Block type

selection table and dimensions							
Type	Un	Weight	A	B	C	D	E
	KV						
MC111	12/28/75	10	220	148	150	128	72
MC112	12/28/75	12	220	148	190	128	104
MC113	12/28/75	18	220	148	250	128	138
MC114	12/28/75	18-24	220	148	300	128	188
MC115	12/28/75	30	220	148	350	128	238
MC123	12/28/75	20	225	158	250	128	138
MC124	12/28/75	24	220	158	300	128	188
MC125	12/28/75	26-30	220	158	350	128	238
MC132	12/28/75	16	220	178	190	128	106
MC133	12/28/75	21	220	178	250	128	138
MC134	12/28/75	25	220	178	300	128	188
MC135	12/28/75	33	220	178	350	128	238
MC142	12/28/75	16	220	198	190	128	106
MC143	12/28/75	20	220	198	250	128	138
MC232	24/50/125	16	250	178	190	128	106
MC233	24/50/125	20-25	250	178	250	128	138
MC234	24/50/125	26	250	178	300	128	188
MC235	24/50/125	35	250	178	350	128	238
MC242	24/50/125	19	250	198	190	128	106
MC243	24/50/125	24	250	198	250	128	138
MC244	24/50/125	31-35	250	198	300	128	188
MC245	24/50/125	37-41	250	198	350	128	238
MC246	24/50/125	42	250	198	400	128	288
MC255	24/50/125	50	280	228	350	128	238
MC265	24/50/125	49	294	248	350	128	238
MC342	36/70/170	26	360	198	210	128	106
MC343	36/70/170	32	360	198	250	128	138
MC344	36/70/170	37	360	198	300	128	188
MC345	36/70/170	43	360	198	350	128	238
MC353	36/70/170	34	360	228	250	128	138
MC354	36/70/170	46	360	228	300	128	188
MC355	36/70/170	52	360	228	350	128	238
MC365	36/70/170	59	360	248	350	128	238
MC376	36/70/170	81	360	268	400	148	268



Primary terminals table

Ip	Single ratio primary					Double ratio primary	
	E1	E2	E2a	E3	E3a	F1	F2
	0...400A	400...1200A	1250A	1250...2000	2000...3000	Up to 300-600A	Up to 600-1200A
C	F	F	F	F	F	F	F
mm	mm	mm	mm	mm	mm	mm	mm
150	70	-	-	-	-	-	-
190	70	50	50	-	-	74	-
250	120	70	70	70	70	74	74
300	120	120	120	120	120	120	120
350	170	170	170	170	170	170	170
400	220	220	220	220	220	-	-

This document is the property of Pars Shar and maybe changed without prior notice